



Power of Elegance 2018

Memories with

Dr. IRENE IKANYENG SETLHAKO

公益財団法人 がん研究会有明病院

乳腺センター

大野真司

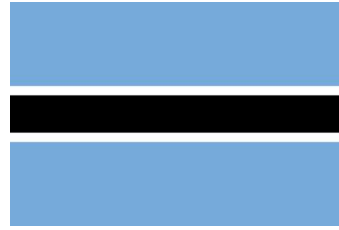
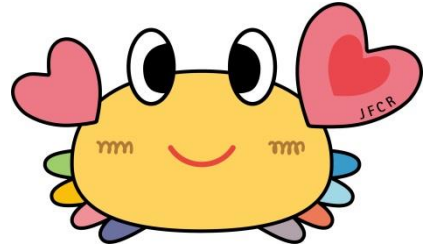
Cancer Institute Hospital

Breast Oncology Center

Shinji Ohno, M.D., Ph.D.



# がん研究会有明病院 Cancer Institute Hospital on 10 May, 2017



医科学研究者  
国際活動支援協議会



Dr. IRENE IKANYENG  
SETLHAKO

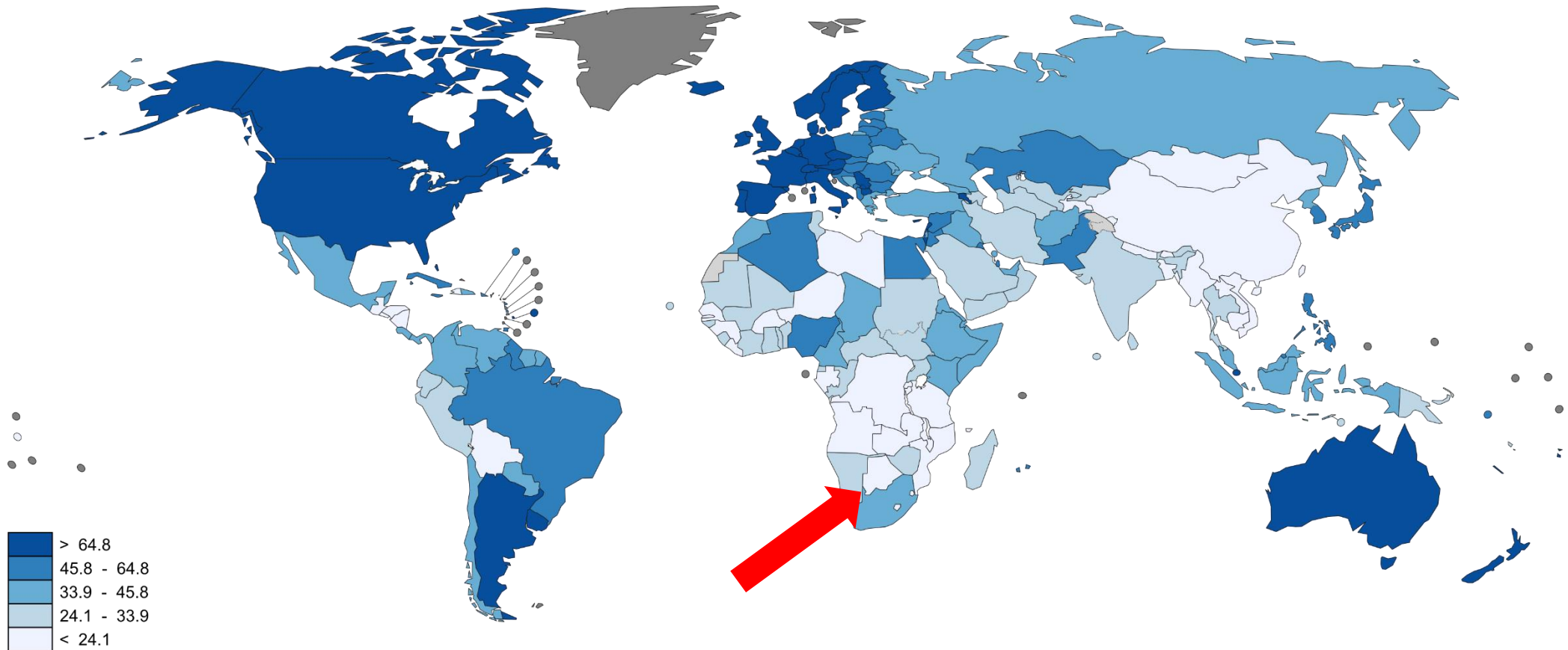


ボツワナ共和国  
独立：1966年  
公用語：英語、ツワナ語  
首都：ハボローネ  
面積：60万km<sup>2</sup>  
人口：2,030,000人  
鉱物：ダイヤモンド



# 乳がん年齢調整罹患率（10万人あたり）

## Breast Cancer Age-Standardized Incidence Rates per 100,000



The boundaries and names shown and the designations used on this map do not imply the expression of any opinion whatsoever on the part of the World Health Organization concerning the legal status of any country, territory, city or area or of its authorities, or concerning the delimitation of its frontiers or boundaries. Dotted and dashed lines on maps represent approximate border lines for which there may not yet be full agreement.

Data source: GLOBOCAN 2012  
Map production: IARC  
World Health Organization



© WHO 2015. All rights reserved

# Dr. IRENE IKANYENG SETLHAKO来日 with PhemeloTelekelo、First Secretary (ペメロ テレケロー一等書記官) 研修期間 (2018年11月21日～12月5日)



# 組織検査室

## Biopsy room with mammography



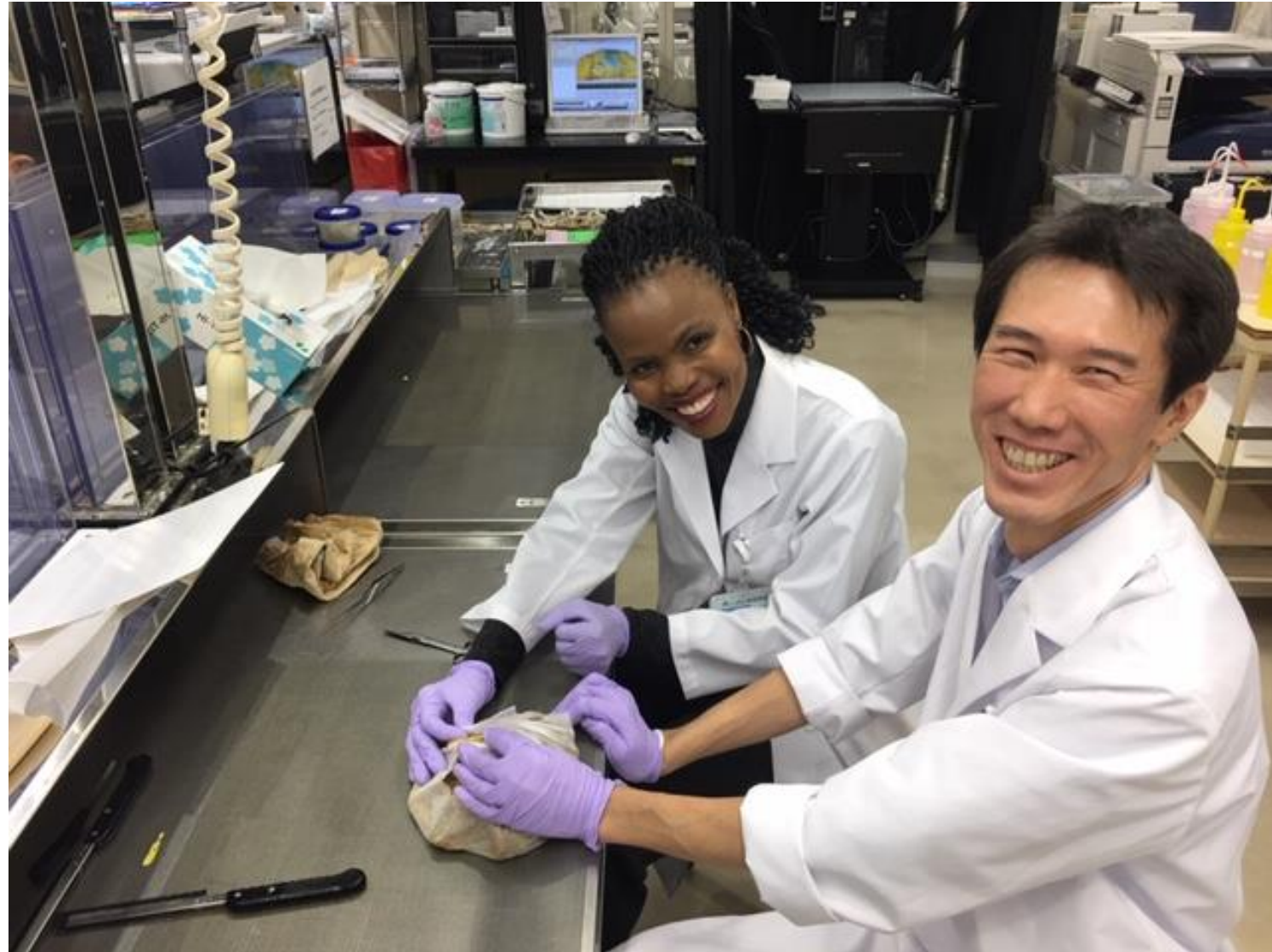
# 内視鏡検査と緩和ケア病棟 Endoscopy and Palliative care unit



# 外来化学療法室 Chemotherapy unit



# 病理組織検査室 Pathological unit





# 特別病棟

## VIP room ( \$ 1,500/day)



# 医事課 Office



# 歓迎会 Welcome Party



# 研修証明書 Certificate

